

Is that a bespoke watch box displaying the **Neat Lock & Hinges** below? See Page 2...



Fit the Precision Catch in 10 easy Steps...

Button catches are an ideal way to keep a box closed when a lock is not suitable. We stock three types of button catch –

- the [standard button catch](#),
- the [sliding button catch](#) and perhaps the most attractive being
- the [precision spring button catch](#) which does not require screws for fitting. Its special feature is the lid springing open by approx 5mm when the button is pushed.

Accuracy is all important, so we've produced these 10 easy steps for you to follow when fitting a precision button catch.

1. Check the minimum box thickness is at least 12mm. Have the necessary **tools** to hand, these include

- Drill Press
- Pencil and Ruler
- Drill bits – 18mm/ 10mm/ 8mm/5.5mm

Please refer to the diagram on page 2 throughout these steps.

2. Once your box is hinged check your **alignment** is good at the front and sides. Use your pencil to mark a centre line down the lid and base. Remove the hinges and continue the pencil line onto the inner lips.

3. Cut an **mdf fence** for your drill press table,

which is longer than your box and at least the same height as your lower carcass.

4. Mark a **centre line** on your fence and fit your 10mm bit. Align the centre of the bit to the centre line of the fence and clamp it in place.

5. Make a few **test cuts** using scrap until the centre of the hole is exactly 6mm away from the front edge. Use calipers to check the measurement. **Being precise at this stage is essential.** Place your lid on the drill table and shim the lid to the same height as the fence

Align the centre line on your lid to the centre line of the fence and clamp the lid to the fence, drill hole Δ 16mm deep, check this depth with calipers but best to be slightly deeper (16.20mm) as the spring loaded part can be shimmed up to the exact height later on.

6, Remove the lid and place the lower part of your box on the table and align the centre marks up - clamp in place. Fit your 5.5mm drill bit and drill to a depth of 12mm. Remove drill and fit your 8mm drill then **without changing your setup**, drill the same hole to a depth of 1.5mm.

7. You are now ready to **drill the front** of your box so unclamp the box and fit your 18mm drill. Making a few test cuts, adjust the

fence until the centre of the drill is 12mm from the front edge. Now align the centre line of your lower box to the centre of your drill bit and clamp in place. Drill to a depth of 10mm and you're done.

8. Go ahead and **test fit**.

9. Fit your hinges to your box and, while leaving the cap to one side, **carefully insert the lid mechanism.** On the lower part of the box assemble the spring, button and collar and push into place.

While holding this all in position, close the lid and the mechanism should engage. If it does not, try adding masking tape to the bottom of the lid spring until it gives a **solid connection.**

10. Add a few drops of 30 minute **epoxy** to the collar and around the inner rim of the cap mortise. Add the front assembly and push the cap in place, ensuring it sits in **virtually flush.** Once the epoxy is dry, remove the clamp from the front. That's your precision spring button catch fitted! Any queries please [contact us](#).

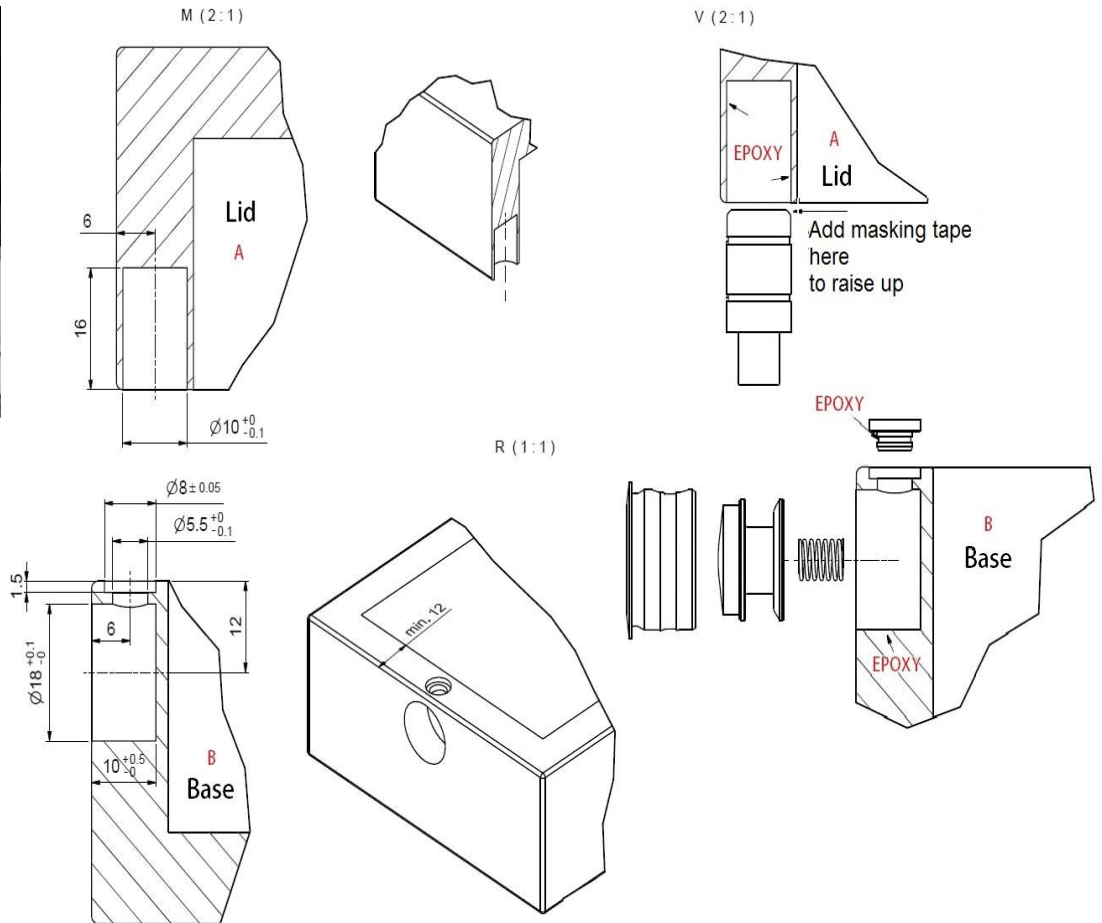




Hardware Celebrity News

The very talented and beautiful Russian long jump athlete Darya Klishina was presented with this bespoke watch box by her sponsor Seiko.

It features the [Neat lock](#) and hinge in [solid stainless steel](#). More box images can be viewed at [Hawthorne Crafts](#).



Recent Hardware Reviews

“When looking for quality hinges and a great service I stopped looking once I found Hawthorne Crafts, aka Jewellery Box Hardware - great service and always nice to talk to Ian and Kate. Very reliable and excellent standard of fittings for my bespoke pieces.”

Luke W, England

“I have experimented with most box Hinges and felt the neat design was excellent. The hinge is elegant in design and very well made, it will be our go to stop hinge.”

Matthew P, England

The Must-Have Quality Neat Package

Co-ordinating box hardware is a bit like organising clothes. You get it right and the compliments pour in, but if you mix and match, it can end up a real disaster. We have therefore developed the Neat Package – three hardware items that compliment and enhance your boxes for that professional, quality look.

As an introductory offer we have 10% OFF the Neat Package until 31 May 2015. The Neat Package includes -

- 1 Neat Lock
- 1 Pair Neat Hinges
- 1 Pair Neat Tray Handles

Thank you for your support and we hope you enjoy this offer!

- **Kate & Ian**
Jewellery Box Hardware Team

